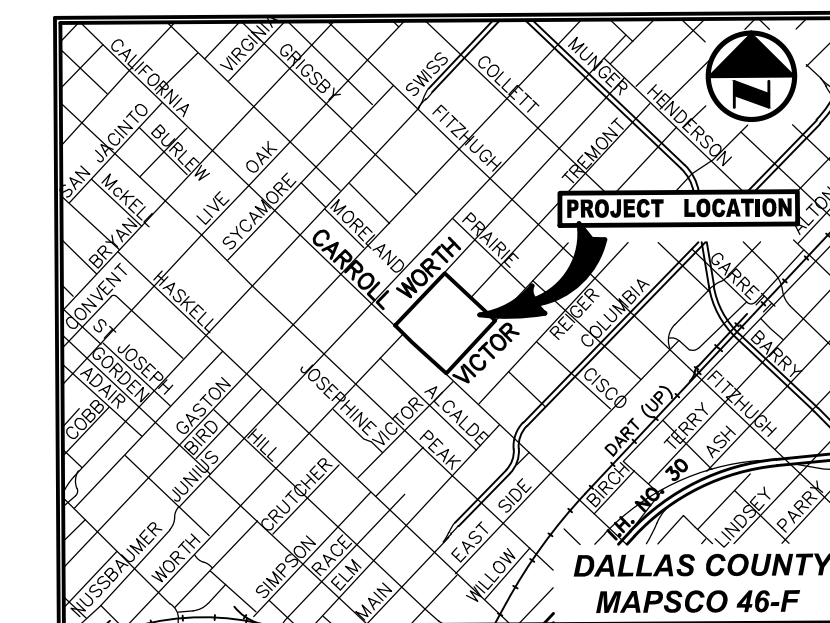
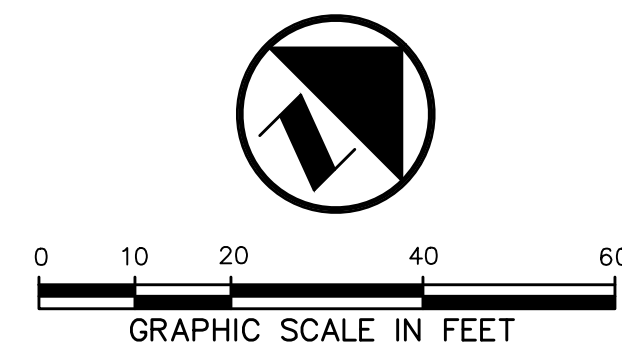


MATCHLINE (SEE SHEET 1)

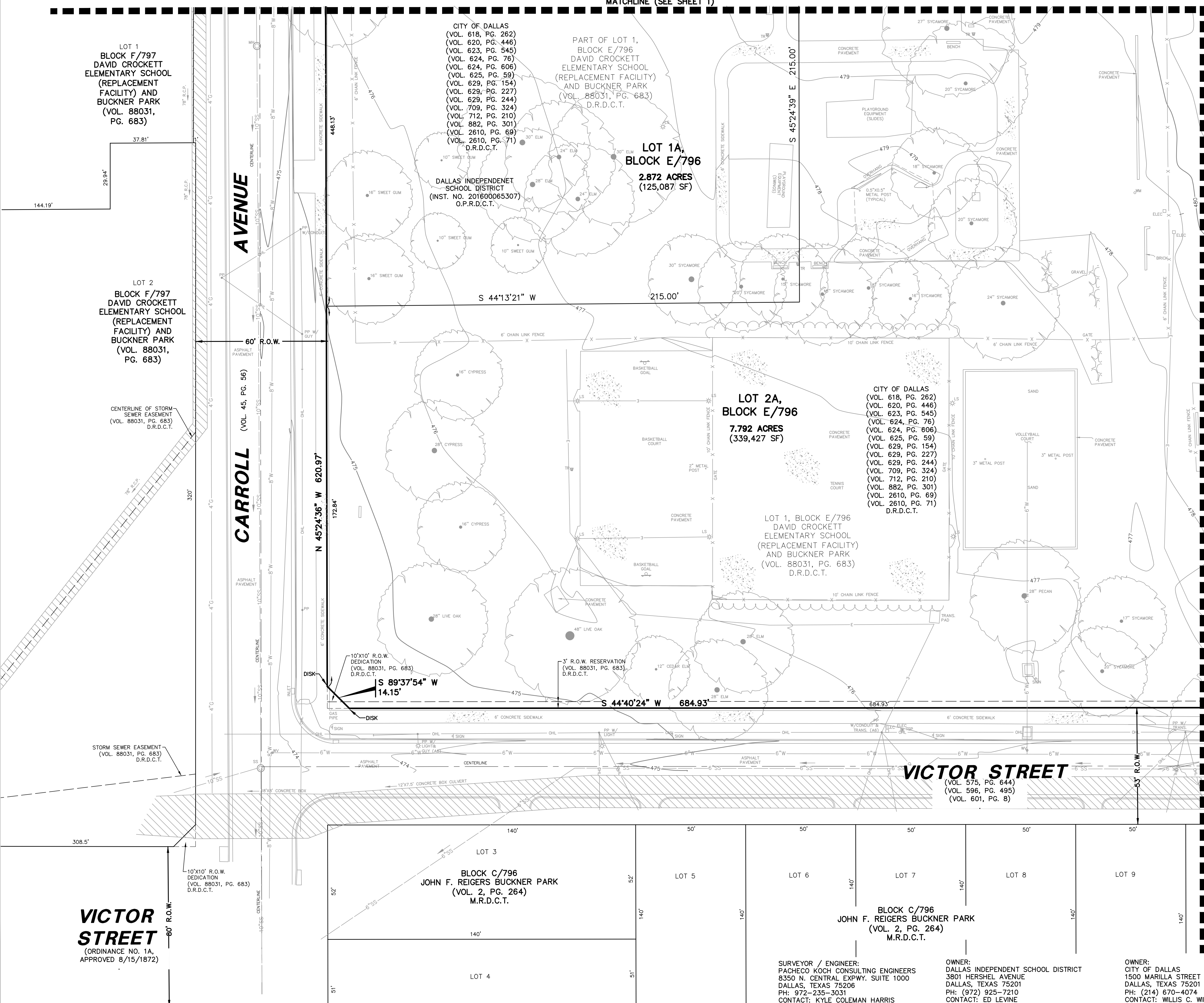


VICINITY MAP (NOT TO SCALE)

LEGEND

- ACB A/C UNIT
B BASKETBALL GOAL
BL BOLLARD
CBL UG CABLE MARKER
CO CLEANOUT
CV CABLE VALVE
ELEC ELECTRIC BOX
ELEC ELECTRIC MANHOLE
EMB ELECTRIC METER
ELEC ELECTRIC VAULT
ELEC UG ELECTRIC MARKER
FBC FIRE DEPT. CONN.
FH FIRE HYDRANT
FIB UG FIB. OPTIC MARKER
FIB FIB. OPTIC MANHOLE
FP FLAG POLE
FLR FLOOD LIGHT
FO FIBER OPTIC VAULT
GAS UG GAS MARKER
GAS GAS MANHOLE
GMS GAS METER
GP GUY POLE
GST GOAL POST
GT GREASE TRAP
GAS TEST STATION
GAS VALVE
GUY ANCHOR
HAND HOLE (TYPE UNKNOWN)
HAND HOLE ELECTRIC
HAND HOLE TELEPHONE
ICV IRRIGATION CONTROL VALVE
LS LIGHT STANDARD
MH MANHOLE (TYPE UNKNOWN)
MB MAILBOX
MW MONITORING WELL
NPS NEWSPAPER STAND
PB PULL BOX (TYPE UNKNOWN)
PBE PULL BOX ELECTRIC
PBC PULL BOX CABLE
PBF PULL BOX FIBER OPTIC
PBT PULL BOX TELEPHONE
PP PAY PHONE
PLM UG PIPELINE MARKER
PM PARKING METER
PP POWER POLE
PPM METAL UTILITY POLE
PP W/ LIGHT
PP W/ GUY ANCHOR
PP W/ CROSS
ARM (LENGTH IN FEET)
RD ROOF DRAIN
SAC TELEPHONE SAC BOX
SC SECURITY CAMERA
SIGN TRAFFIC SIGN
SS SAN SEWER MANHOLE
SS UG SAN. SEWER MARKER
TEL UG TELEPHONE BOX
TR TRASH CAN
TS TRAFFIC SIGNAL
TSCD TRAFFIC SIGNAL CONTROL
TSP TRAFFIC SIGN POLE
TS TRAFFIC SENSOR
TEST STA. (TYPE UNKNOWN)
TELEPHONE VAULT
SEPTIC TANK
STORM SEWER MANHOLE
TRAFFIC CAMERA
TELEPHONE MANHOLE
VAULT (TYPE UNKNOWN)
VENT
UG WATER MARKER
WM WATER METER
WM WATER MANHOLE
WATER VAULT
WATER VALVE
PIN FLAG BLUE
PIN FLAG GREEN
PIN FLAG PURPLE
PIN FLAG PINK
PIN FLAG ORANGE
PIN FLAG RED
PIN FLAG WHITE
PIN FLAG YELLOW
PIN FLAG CABLE
PIN FLAG ELECTRIC
PIN FLAG FIBER OPTIC
PIN FLAG GAS
PIN FLAG SEWER
PIN FLAG TELEPHONE
PIN FLAG WATER
1/2-INCH IRON ROD
3/4-INCH ALUMINUM DISK
STAMPED "BUCKNER PARK-PACHECO KOCH" SET
CONTROLLING MONUMENT
PROPERTY LINE
EASEMENT LINE
SETBACK LINE
FENCE
OVERHEAD UTILITY LINE
HAND RAIL
GUARD RAIL
UNDERGROUND ELECTRIC LINE
UNDERGROUND TELEPHONE LINE
UNDERGROUND CABLE LINE
UNDERGROUND GAS LINE
STORM DRAIN LINE
WATER LINE
SANITARY SEWER LINE
EXIST CONTOUR

MATCHLINE (SEE SHEET 4)



LOT TABLE

Table with 3 columns: LOT NO., ACRES, SF. Rows include Lot 1A (2.872 acres, 125,087 SF), Lot 2A (7.792 acres, 339,427 SF), and a TOTAL row (10.664 acres, 464,514 SF).

PRELIMINARY PLAT BUCKNER PARK

BEING A REPLAT OF ALL OF LOTS 1 AND 2, BLOCK E/796 DAVID CROCKETT ELEMENTARY SCHOOL (REPLACEMENT FACILITY) LOCATED IN THE CITY OF DALLAS, TEXAS AND BEING OUT OF THE JOHN GRIGSBY SURVEY, ABSTRACT NO. 495, DALLAS COUNTY, TEXAS SHEET 3 OF 5 CITY PLAN FILE NO. S156-217

Pacheco Koch logo and contact information: 8350 N. CENTRAL EXPWY., SUITE 1000 DALLAS, TX 75206 972.235.3031 TX REG. ENGINEERING FIRM F-14439 TX REG. SURVEYING FIRM LS-10193805

Table with 5 columns: DRAWN BY (MWW), CHECKED BY (KCH), SCALE (1"=20'), DATE (JUNE 2016), JOB NUMBER (1366-14.299).

Vertical text on the left edge: MWD 06/02/2016 11:44AM M:\DWG-13\1366-14.299\DWG\SURVEY_CSD_2012\1366-14.299PP.DWG

Vertical text on the right edge: BUCKNER PARK - PRELIMINARY PLAT

VICTOR STREET (ORDINANCE NO. 1A, APPROVED 8/15/1872)

SURVEYOR / ENGINEER: PACHECO KOCH CONSULTING ENGINEERS 8350 N. CENTRAL EXPWY. SUITE 1000 DALLAS, TEXAS 75206 PH: 972-235-3031 CONTACT: KYLE COLEMAN HARRIS
OWNER: DALLAS INDEPENDENT SCHOOL DISTRICT 3801 HERSHEL AVENUE DALLAS, TEXAS 75201 PH: (972) 925-4074 CONTACT: ED LEVINE
OWNER: CITY OF DALLAS 1500 MARILLA STREET DALLAS, TEXAS 75201 PH: (214) 670-4074 CONTACT: WILLIS C. WINTERS